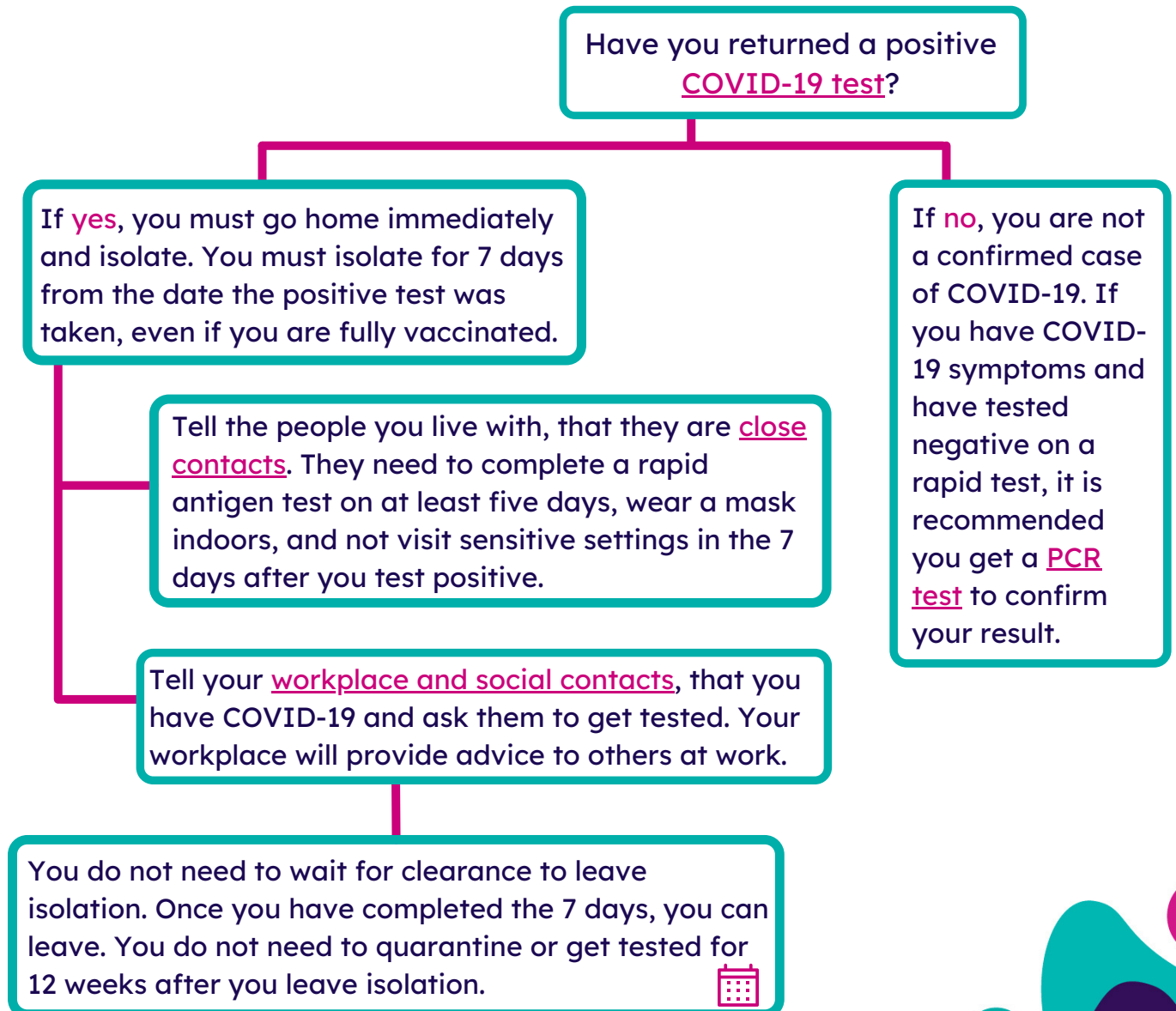


I am a COVID-19 case.

This flowchart is designed to provide an overview of what you need to do as a COVID-19 case. For more information, read the Department of Health's [checklist for COVID-19 cases](#).

A COVID-19 case is someone who has taken a COVID-19 [PCR test](#) or rapid antigen test (RAT) and received a positive result. If you are unwell and it is an emergency, call **000**. Do not wait for someone to call you



If you are unsure about what to do as a confirmed case, you can [email](#) us. WPHU is responsible for the western metro region, if you are unsure of what region you live in, [click here](#).

